

Department of Health & Human Resources
 Bureau for Medical Services
 Organizational Chart

Nancy V. Atkins
 Commissioner

Tina Bailes
 Deputy Commissioner
 Office of Finance & Administration

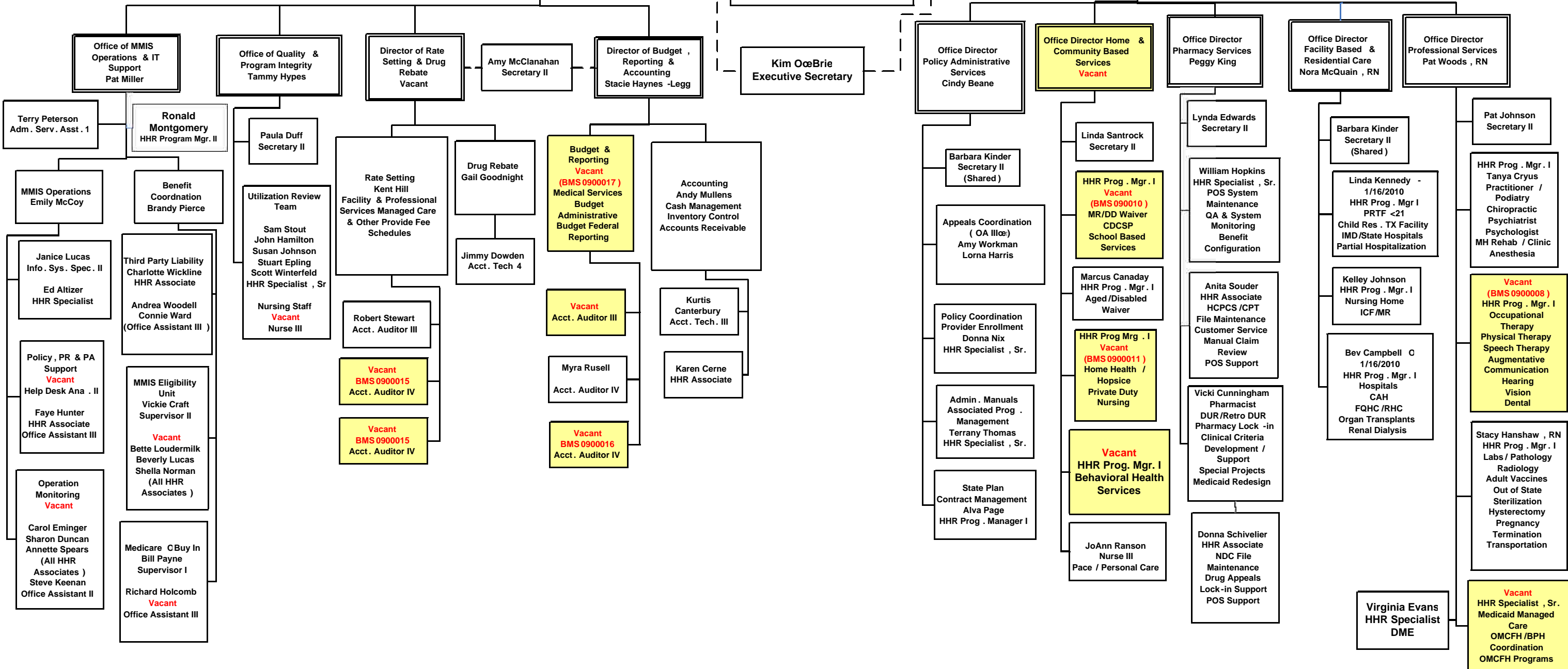
Becky Carter O 1/16/2010
 Executive Secretary
 Pam Wiley O Secretary 1 (Temp)
 Janet Armstead OOA II
 Vacant
 Public Info Specialist II
 Martha Edens O Personnel
 Adm. Serv. Asst. II

Vacant
 Deputy Commissioner
 Office of Policy Coordination

Frances Secoy
 Secretary II
 (Shared)

Dr. James Becker
 Medical Director
 (Temporary)
 Cindy Knighten O Nurse II
 Medical Research
 Vacant
 Nurse III
 Disease Management

Legal & Regulatory
 Alva Pgae
 Attorney Supervisor
 Nora Antlake
 Attorney III
 Jennifer Dingess
 Secretary II
 (Shared)



Department of Health & Human Resources
 Bureau for Medical Services
 Organizational Chart

Nancy V. Atkins
 Commissioner

Tina Bailes
 Deputy Commissioner
 Office of Finance & Administration

Becky Carter O 1/16/2010
 Executive Secretary
 Pam Wiley O Secretary 1 (Temp)
 Janet Armstead OOA II
 Vacant
 Public Info Specialist II
 Martha Edens O Personnel
 Adm. Serv. Asst. II

Vacant
 Deputy Commissioner
 Office of Policy Coordination

Frances Secoy
 Secretary II
 (Shared)

Dr. James Becker
 Medical Director
 (Temporary)

Cindy Knighten O Nurse II
 Medical Research
 Vacant
 Nurse III
 Disease Management

Legal & Regulatory
 Alva Pgae
 Attorney Supervisor

Nora Antlake
 Attorney III

Jennifer Dingess
 Secretary II
 (Shared)

Office of MMIS
 Operations & IT
 Support
 Pat Miller

Office of Quality & Program Integrity
 Tammy Hypes

Director of Rate Setting & Drug Rebate
 Vacant

Amy McClanahan
 Secretary II

Director of Budget, Reporting & Accounting
 Stacie Haynes -Legg

Kim OeBrie
 Executive Secretary

Office Director Policy Administrative Services
 Cindy Beane

Office Director Home & Community Based Services
 Vacant

Office Director Pharmacy Services
 Peggy King

Office Director Facility Based & Residential Care
 Nora McQuain, RN

Office Director Professional Services
 Pat Woods, RN

Terry Peterson
 Adm. Serv. Asst. 1

Ronald Montgomery
 HHR Program Mgr. II

Paula Duff
 Secretary II

Utilization Review Team
 Sam Stout
 John Hamilton
 Susan Johnson
 Stuart Epling
 Scott Winterfeld
 HHR Specialist, Sr

Rate Setting
 Kent Hill
 Facility & Professional Services
 Managed Care & Other Provide Fee Schedules

Drug Rebate
 Gail Goodnight

Budget & Reporting
 Vacant
 (BMS 0900017)
 Medical Services Budget
 Administrative Budget Federal Reporting

Accounting
 Andy Mullens
 Cash Management
 Inventory Control
 Accounts Receivable

Barbara Kinder
 Secretary II
 (Shared)

Linda Santrock
 Secretary II

Lynda Edwards
 Secretary II

Barbara Kinder
 Secretary II
 (Shared)

Pat Johnson
 Secretary II

MMIS Operations
 Emily McCoy

Benefit Coordination
 Brandy Pierce

Nursing Staff
 Vacant
 Nurse III

Rate Setting
 Robert Stewart
 Acct. Auditor III

Drug Rebate
 Jimmy Dowden
 Acct. Tech 4

Vacant
 Acct. Auditor III

Accounting
 Kurtis Canterbury
 Acct. Tech. III

Appeals Coordination
 (OA III)æ
 Amy Workman
 Lorna Harris

Linda Kennedy - 1/16/2010
 HHR Prog. Mgr I
 PRTF <21
 Child Res. TX Facility
 IMD/State Hospitals
 Partial Hospitalization

HHR Prog Mgr. I
 Vacant
 (BMS 0900010)
 MR/DD Waiver
 CDCSP
 School Based Services

William Hopkins
 HHR Specialist, Sr.
 POS System Maintenance
 QA & System Monitoring
 Benefit Configuration

Kelley Johnson
 HHR Prog. Mgr. I
 Nursing Home
 ICF/MR

HHR Prog. Mgr. I
 Tanya Cryus
 Practitioner / Podiatry
 Chiropractic
 Psychiatrist
 Psychologist
 MH Rehab / Clinic
 Anesthesia

Janice Lucas
 Info. Sys. Spec. II
 Ed Altizer
 HHR Specialist

Third Party Liability
 Charlotte Wickline
 HHR Associate

MMIS Eligibility Unit
 Vickie Craft
 Supervisor II

Vacant
 BMS 0900015
 Acct. Auditor IV

Accounting
 Karen Cerne
 HHR Associate

Policy Coordination
 Provider Enrollment
 Donna Nix
 HHR Specialist, Sr.

Marcus Canaday
 HHR Prog. Mgr. I
 Aged/Disabled Waiver

Policy Coordination
 Provider Enrollment
 Donna Nix
 HHR Specialist, Sr.

HHR Prog Mrg. I
 Vacant
 (BMS 0900011)
 Home Health / Hospice
 Private Duty Nursing

Anita Souder
 HHR Associate
 HCPCS/CPT File Maintenance
 Customer Service Manual Claim Review
 POS Support

Bev Campbell O 1/16/2010
 HHR Prog. Mgr. I
 Hospitals
 CAH
 FQHC/RHC
 Organ Transplants
 Renal Dialysis

Vacant
 (BMS 0900008)
 HHR Prog. Mgr. I
 Occupational Therapy
 Physical Therapy
 Speech Therapy
 Augmentative Communication
 Hearing
 Vision
 Dental

Policy, PR & PA Support
 Vacant
 Help Desk Ana. II
 Faye Hunter
 HHR Associate
 Office Assistant III

MMIS Eligibility Unit
 Bette Loudermilk
 Beverly Lucas
 Shella Norman
 (All HHR Associates)

Vacant
 BMS 0900015
 Acct. Auditor IV

Admin. Manuals
 Associated Prog. Management
 Terrany Thomas
 HHR Specialist, Sr.

Myra Rusell
 Acct. Auditor IV

State Plan Contract Management
 Alva Page
 HHR Prog. Manager I

HHR Prog Mrg. I
 Vacant
 Behavioral Health Services

Vicki Cunningham
 Pharmacist
 DUR/Retro DUR
 Pharmacy Lock -in
 Clinical Criteria Development / Support
 Special Projects
 Medicaid Redesign

Donna Schivelier
 HHR Associate
 NDC File Maintenance
 Drug Appeals
 Lock-in Support
 POS Support

Stacy Hanshaw, RN
 HHR Prog. Mgr. I
 Labs / Pathology
 Radiology
 Adult Vaccines
 Out of State Sterilization
 Hysterectomy
 Pregnancy Termination
 Transportation

Operation Monitoring
 Vacant

Medicare CBuy In
 Bill Payne
 Supervisor I

Vacant
 BMS 0900016
 Acct. Auditor IV

Virginia Evans
 HHR Specialist
 DME

Vacant
 HHR Specialist, Sr.
 Medicaid Managed Care
 OMCFH/BPH
 Coordination
 OMCFH Programs

Richard Holcomb
 Vacant
 Office Assistant III

JoAnn Ranson
 Nurse III
 Pace / Personal Care

Donna Schivelier
 HHR Associate
 NDC File Maintenance
 Drug Appeals
 Lock-in Support
 POS Support

Stacy Hanshaw, RN
 HHR Prog. Mgr. I
 Labs / Pathology
 Radiology
 Adult Vaccines
 Out of State Sterilization
 Hysterectomy
 Pregnancy Termination
 Transportation

JoAnn Ranson
 Nurse III
 Pace / Personal Care

Donna Schivelier
 HHR Associate
 NDC File Maintenance
 Drug Appeals
 Lock-in Support
 POS Support

Stacy Hanshaw, RN
 HHR Prog. Mgr. I
 Labs / Pathology
 Radiology
 Adult Vaccines
 Out of State Sterilization
 Hysterectomy
 Pregnancy Termination
 Transportation

Virginia Evans
 HHR Specialist
 DME

Vacant
 HHR Specialist, Sr.
 Medicaid Managed Care
 OMCFH/BPH
 Coordination
 OMCFH Programs

Department of Health & Human Resources
 Bureau for Medical Services
 Organizational Chart

**Nancy V. Atkins
 Commissioner**

**Tina Bailes
 Deputy Commissioner
 Office of Finance & Administration**

**Becky Carter O 1/16/2010
 Executive Secretary**
 Pam Wiley O Secretary 1 (Temp)
 Janet Armstead OOA II
Vacant
 Public Info Specialist II
 Martha Edens O Personnel
 Adm. Serv. Asst. II

**Vacant
 Deputy Commissioner
 Office of Policy Coordination**

**Frances Secoy
 Secretary II
 (Shared)**

**Dr. James Becker
 Medical Director
 (Temporary)**
**Cindy Knighten O Nurse II
 Medical Research
 Vacant
 Nurse III
 Disease Management**

**Legal & Regulatory
 Alva Pgae
 Attorney Supervisor**

**Nora Antlake
 Attorney III**

**Jennifer Dingess
 Secretary II
 (Shared)**

**Office of MMIS
 Operations & IT
 Support
 Pat Miller**

**Office of Quality &
 Program Integrity
 Tammy Hypes**

**Director of Rate
 Setting & Drug
 Rebate
 Vacant**

**Amy McClanahan
 Secretary II**

**Director of Budget ,
 Reporting &
 Accounting
 Stacie Haynes -Legg**

**Kim OeBrie
 Executive Secretary**

**Office Director
 Policy Administrative
 Services
 Cindy Beane**

**Office Director Home &
 Community Based
 Services
 Vacant**

**Office Director
 Pharmacy Services
 Peggy King**

**Office Director
 Facility Based &
 Residential Care
 Nora McQuain , RN**

**Office Director
 Professional Services
 Pat Woods , RN**

**Terry Peterson
 Adm. Serv. Asst. 1**

**Ronald
 Montgomery
 HHR Program Mgr. II**

**Paula Duff
 Secretary II**

**Utilization Review
 Team
 Sam Stout
 John Hamilton
 Susan Johnson
 Stuart Epling
 Scott Winterfeld
 HHR Specialist , Sr**

**Rate Setting
 Kent Hill
 Facility & Professional
 Services Managed Care
 & Other Provide Fee
 Schedules**

**Drug Rebate
 Gail Goodnight**

**Budget &
 Reporting
 Vacant
 (BMS 0900017)
 Medical Services
 Budget
 Administrative
 Budget Federal
 Reporting**

**Accounting
 Andy Mullens
 Cash Management
 Inventory Control
 Accounts Receivable**

**Barbara Kinder
 Secretary II
 (Shared)**

**Linda Santrock
 Secretary II**

**Lynda Edwards
 Secretary II**

**Barbara Kinder
 Secretary II
 (Shared)**

**Pat Johnson
 Secretary II**

**MMIS Operations
 Emily McCoy**

**Benefit
 Coordination
 Brandy Pierce**

**Nursing Staff
 Vacant
 Nurse III**

**Robert Stewart
 Acct. Auditor III**

**Jimmy Dowden
 Acct. Tech 4**

**Vacant
 Acct. Auditor III**

**Kurtis
 Canterbury
 Acct. Tech. III**

**Appeals Coordination
 (OA III)
 Amy Workman
 Lorna Harris**

**HHR Prog . Mgr. I
 Vacant
 (BMS 0900010)
 MR/DD Waiver
 CDCSP
 School Based
 Services**

**William Hopkins
 HHR Specialist , Sr.
 POS System
 Maintenance
 QA & System
 Monitoring
 Benefit
 Configuration**

**Linda Kennedy -
 1/16/2010
 HHR Prog . Mgr I
 PRTF <21
 Child Res . TX Facility
 IMD/State Hospitals
 Partial Hospitalization**

**HHR Prog . Mgr. I
 Tanya Cryus
 Practitioner /
 Podiatry
 Chiropractic
 Psychiatrist
 Psychologist
 MH Rehab / Clinic
 Anesthesia**

**Janice Lucas
 Info. Sys. Spec. II
 Ed Altizer
 HHR Specialist**

**Third Party Liability
 Charlotte Wickline
 HHR Associate**

**Andrea Woodell
 Connie Ward
 (Office Assistant III)**

**Vacant
 BMS 0900015
 Acct. Auditor IV**

**Myra Rusell
 Acct. Auditor IV**

**Vacant
 BMS 0900016
 Acct. Auditor IV**

**Karen Cerne
 HHR Associate**

**Policy Coordination
 Provider Enrollment
 Donna Nix
 HHR Specialist , Sr.**

**Marcus Canaday
 HHR Prog . Mgr. I
 Aged /Disabled
 Waiver**

**Anita Souder
 HHR Associate
 HCPCS /CPT
 File Maintenance
 Customer Service
 Manual Claim
 Review
 POS Support**

**Kelley Johnson
 HHR Prog . Mgr. I
 Nursing Home
 ICF/MR**

**Vacant
 (BMS 0900008)
 HHR Prog . Mgr. I
 Occupational
 Therapy
 Physical Therapy
 Speech Therapy
 Augmentative
 Communication
 Hearing
 Vision
 Dental**

**Policy , PR & PA
 Support
 Vacant
 Help Desk Ana . II**

**MMIS Eligibility
 Unit
 Vickie Craft
 Supervisor II**

**Vacant
 BMS 0900015
 Acct. Auditor IV**

**Vacant
 BMS 0900015
 Acct. Auditor IV**

**Terrary Thomas
 HHR Specialist , Sr.**

**Vacant
 HHR Prog. Mgr. I
 Behavioral Health
 Services**

**Admin. Manuals
 Associated Prog .
 Management
 Terrary Thomas
 HHR Specialist , Sr.**

**HHR Prog Mrg . I
 Vacant
 (BMS 0900011)
 Home Health /
 Hospice
 Private Duty
 Nursing**

**Vicki Cunningham
 Pharmacist
 DUR/Retro DUR
 Pharmacy Lock -in
 Clinical Criteria
 Development /
 Support
 Special Projects
 Medicaid Redesign**

**Bev Campbell O
 1/16/2010
 HHR Prog . Mgr. I
 Hospitals
 CAH
 FQHC /RHC
 Organ Transplants
 Renal Dialysis**

**Vacant
 HHR Prog . Mgr. I
 Medicaid Managed
 Care
 OMCFH /BPH
 Coordination
 OMCFH Programs**

**Stacy Hanshaw , RN
 HHR Prog . Mgr. I
 Labs / Pathology
 Radiology
 Adult Vaccines
 Out of State
 Sterilization
 Hysterectomy
 Pregnancy
 Termination
 Transportation**

**Operation
 Monitoring
 Vacant**

**Medicare CBuy In
 Bill Payne
 Supervisor I**

**Vacant
 HHR Specialist , Sr.
 Medicaid Managed
 Care
 OMCFH /BPH
 Coordination
 OMCFH Programs**

**Richard Holcomb
 Vacant
 Office Assistant III**

**State Plan
 Contract Management
 Alva Page
 HHR Prog . Manager I**

**JoAnn Ranson
 Nurse III
 Pace / Personal Care**

**Donna Schivelier
 HHR Associate
 NDC File
 Maintenance
 Drug Appeals
 Lock-in Support
 POS Support**

**Virginia Evans
 HHR Specialist
 DME**

Department of Health & Human Resources
 Bureau for Medical Services
 Organizational Chart

**Nancy V. Atkins
 Commissioner**

**Tina Bailes
 Deputy Commissioner
 Office of Finance & Administration**

**Becky Carter O 1/16/2010
 Executive Secretary**
 Pam Wiley O Secretary 1 (Temp)
 Janet Armstead OOA II
Vacant
 Public Info Specialist II
 Martha Edens O Personnel
 Adm. Serv. Asst. II

**Vacant
 Deputy Commissioner
 Office of Policy Coordination**

**Frances Secoy
 Secretary II
 (Shared)**

**Dr. James Becker
 Medical Director
 (Temporary)**

**Cindy Knighten O Nurse II
 Medical Research
 Vacant
 Nurse III
 Disease Management**

**Legal & Regulatory
 Alva Pgae
 Attorney Supervisor**

**Nora Antlake
 Attorney III**

**Jennifer Dingess
 Secretary II
 (Shared)**

**Office of MMIS
 Operations & IT
 Support
 Pat Miller**

**Office of Quality &
 Program Integrity
 Tammy Hypes**

**Director of Rate
 Setting & Drug
 Rebate
 Vacant**

**Amy McClanahan
 Secretary II**

**Director of Budget,
 Reporting &
 Accounting
 Stacie Haynes -Legg**

**Kim OeBrie
 Executive Secretary**

**Office Director
 Policy Administrative
 Services
 Cindy Beane**

**Office Director Home &
 Community Based
 Services
 Vacant**

**Office Director
 Pharmacy Services
 Peggy King**

**Office Director
 Facility Based &
 Residential Care
 Nora McQuain, RN**

**Office Director
 Professional Services
 Pat Woods, RN**

**Terry Peterson
 Adm. Serv. Asst. 1**

**Ronald
 Montgomery
 HHR Program Mgr. II**

**Paula Duff
 Secretary II**

**Utilization Review
 Team
 Sam Stout
 John Hamilton
 Susan Johnson
 Stuart Epling
 Scott Winterfeld
 HHR Specialist, Sr**

**Rate Setting
 Kent Hill
 Facility & Professional
 Services Managed Care
 & Other Provide Fee
 Schedules**

**Drug Rebate
 Gail Goodnight**

**Budget &
 Reporting
 Vacant
 (BMS 0900017)
 Medical Services
 Budget
 Administrative
 Budget Federal
 Reporting**

**Accounting
 Andy Mullens
 Cash Management
 Inventory Control
 Accounts Receivable**

**Barbara Kinder
 Secretary II
 (Shared)**

**Linda Santrock
 Secretary II**

**Lynda Edwards
 Secretary II**

**Barbara Kinder
 Secretary II
 (Shared)**

**Pat Johnson
 Secretary II**

**MMIS Operations
 Emily McCoy**

**Benefit
 Coordination
 Brandy Pierce**

**Nursing Staff
 Vacant
 Nurse III**

**Robert Stewart
 Acct. Auditor III**

**Jimmy Dowden
 Acct. Tech 4**

**Vacant
 Acct. Auditor III**

**Kurtis
 Canterbury
 Acct. Tech. III**

**Appeals Coordination
 (OA III)æ
 Amy Workman
 Lorna Harris**

**Barbara Kinder
 Secretary II
 (Shared)**

**HHR Prog. Mgr. I
 Vacant
 (BMS 0900010)
 MR/DD Waiver
 CDCSP
 School Based
 Services**

**William Hopkins
 HHR Specialist, Sr.
 POS System
 Maintenance
 QA & System
 Monitoring
 Benefit
 Configuration**

**Linda Kennedy -
 1/16/2010
 HHR Prog. Mgr I
 PRTF <21
 Child Res. TX Facility
 IMD/State Hospitals
 Partial Hospitalization**

**HHR Prog. Mgr. I
 Tanya Cryus
 Practitioner /
 Podiatry
 Chiropractic
 Psychiatrist
 Psychologist
 MH Rehab / Clinic
 Anesthesia**

**Janice Lucas
 Info. Sys. Spec. II
 Ed Altizer
 HHR Specialist**

**Third Party Liability
 Charlotte Wickline
 HHR Associate**

**Andrea Woodell
 Connie Ward
 (Office Assistant III)**

**Vacant
 BMS 0900015
 Acct. Auditor IV**

**Myra Rusell
 Acct. Auditor IV**

**Vacant
 BMS 0900016
 Acct. Auditor IV**

**Karen Cerne
 HHR Associate**

**Policy Coordination
 Provider Enrollment
 Donna Nix
 HHR Specialist, Sr.**

**Marcus Canaday
 HHR Prog. Mgr. I
 Aged/Disabled
 Waiver**

**HHR Prog Mrg. I
 Vacant
 (BMS 0900011)
 Home Health /
 Hospice
 Private Duty
 Nursing**

**Anita Souder
 HHR Associate
 HCPCS/CPT
 File Maintenance
 Customer Service
 Manual Claim
 Review
 POS Support**

**Kelley Johnson
 HHR Prog. Mgr. I
 Nursing Home
 ICF/MR**

**Vacant
 (BMS 0900008)
 HHR Prog. Mgr. I
 Occupational
 Therapy
 Physical Therapy
 Speech Therapy
 Augmentative
 Communication
 Hearing
 Vision
 Dental**

**Policy, PR & PA
 Support
 Vacant
 Help Desk Ana. II**

**MMIS Eligibility
 Unit
 Vickie Craft
 Supervisor II**

**Vacant
 BMS 0900015
 Acct. Auditor IV**

**Vacant
 BMS 0900015
 Acct. Auditor IV**

**Admin. Manuals
 Associated Prog.
 Management
 Terrany Thomas
 HHR Specialist, Sr.**

**HHR Prog Mrg. I
 Vacant
 Behavioral Health
 Services**

**Vicki Cunningham
 Pharmacist
 DUR/Retro DUR
 Pharmacy Lock -in
 Clinical Criteria
 Development /
 Support
 Special Projects
 Medicaid Redesign**

**Bev Campbell O
 1/16/2010
 HHR Prog. Mgr. I
 Hospitals
 CAH
 FQHC/RHC
 Organ Transplants
 Renal Dialysis**

**Stacy Hanshaw, RN
 HHR Prog. Mgr. I
 Labs / Pathology
 Radiology
 Adult Vaccines
 Out of State
 Sterilization
 Hysterectomy
 Pregnancy
 Termination
 Transportation**

**Operation
 Monitoring
 Vacant**

**Medicare CBuy In
 Bill Payne
 Supervisor I**

**Vacant
 BMS 0900015
 Acct. Auditor IV**

**Vacant
 BMS 0900015
 Acct. Auditor IV**

**State Plan
 Contract Management
 Alva Page
 HHR Prog. Manager I**

**JoAnn Ranson
 Nurse III
 Pace / Personal Care**

**Donna Schivelier
 HHR Associate
 NDC File
 Maintenance
 Drug Appeals
 Lock-in Support
 POS Support**

**Virginia Evans
 HHR Specialist
 DME**

**Vacant
 HHR Specialist, Sr.
 Medicaid Managed
 Care
 OMCFH/BPH
 Coordination
 OMCFH Programs**

**Richard Holcomb
 Vacant
 Office Assistant III**

Department of Health & Human Resources
 Bureau for Medical Services
 Organizational Chart

Nancy V. Atkins
 Commissioner

Tina Bailes
 Deputy Commissioner
 Office of Finance & Administration

Becky Carter O 1/16/2010
 Executive Secretary
 Pam Wiley O Secretary 1 (Temp)
 Janet Armstead OOA II
 Vacant
 Public Info Specialist II
 Martha Edens O Personnel
 Adm. Serv. Asst. II

Vacant
 Deputy Commissioner
 Office of Policy Coordination

Frances Secoy
 Secretary II
 (Shared)

Dr. James Becker
 Medical Director
 (Temporary)

Cindy Knighten O Nurse II
 Medical Research
 Vacant
 Nurse III
 Disease Management

Legal & Regulatory
 Alva Pgae
 Attorney Supervisor

Nora Antlake
 Attorney III

Jennifer Dingess
 Secretary II
 (Shared)

Office of MMIS
 Operations & IT
 Support
 Pat Miller

Office of Quality & Program Integrity
 Tammy Hypes

Director of Rate Setting & Drug Rebate
 Vacant

Amy McClanahan
 Secretary II

Director of Budget, Reporting & Accounting
 Stacie Haynes -Legg

Kim OeBrie
 Executive Secretary

Office Director Policy Administrative Services
 Cindy Beane

Office Director Home & Community Based Services
 Vacant

Office Director Pharmacy Services
 Peggy King

Office Director Facility Based & Residential Care
 Nora McQuain, RN

Office Director Professional Services
 Pat Woods, RN

Terry Peterson
 Adm. Serv. Asst. 1

Ronald Montgomery
 HHR Program Mgr. II

Paula Duff
 Secretary II

Utilization Review Team
 Sam Stout
 John Hamilton
 Susan Johnson
 Stuart Epling
 Scott Winterfeld
 HHR Specialist, Sr

Rate Setting
 Kent Hill
 Facility & Professional Services
 Managed Care & Other Provide Fee Schedules

Drug Rebate
 Gail Goodnight

Budget & Reporting
 Vacant
 (BMS 0900017)
 Medical Services
 Budget
 Administrative
 Budget Federal Reporting

Accounting
 Andy Mullens
 Cash Management
 Inventory Control
 Accounts Receivable

Barbara Kinder
 Secretary II
 (Shared)

Linda Santrock
 Secretary II

Lynda Edwards
 Secretary II

Barbara Kinder
 Secretary II
 (Shared)

Pat Johnson
 Secretary II

MMIS Operations
 Emily McCoy

Benefit Coordination
 Brandy Pierce

Third Party Liability
 Charlotte Wickline
 HHR Associate

Rate Setting
 Robert Stewart
 Acct. Auditor III

Drug Rebate
 Jimmy Dowden
 Acct. Tech 4

Vacant
 Acct. Auditor III

Accounting
 Kurtis Canterbury
 Acct. Tech. III

Appeals Coordination
 (OA III)
 Amy Workman
 Lorna Harris

HHR Prog. Mgr. I
 Vacant
 (BMS 0900010)
 MR/DD Waiver
 CDCSP
 School Based Services

William Hopkins
 HHR Specialist, Sr.
 POS System
 Maintenance
 QA & System
 Monitoring
 Benefit
 Configuration

Linda Kennedy -
 1/16/2010
 HHR Prog. Mgr I
 PRTF <21
 Child Res. TX Facility
 IMD/State Hospitals
 Partial Hospitalization

HHR Prog. Mgr. I
 Tanya Cryus
 Practitioner /
 Podiatry
 Chiropractic
 Psychiatrist
 Psychologist
 MH Rehab / Clinic
 Anesthesia

Janice Lucas
 Info. Sys. Spec. II
 Ed Altizer
 HHR Specialist

Third Party Liability
 Andrea Woodell
 Connie Ward
 (Office Assistant III)

Nursing Staff
 Vacant
 Nurse III

Vacant
 BMS 0900015
 Acct. Auditor IV

Vacant
 BMS 0900016
 Acct. Auditor IV

Accounting
 Karen Cerne
 HHR Associate

Policy Coordination
 Provider Enrollment
 Donna Nix
 HHR Specialist, Sr.

Marcus Canaday
 HHR Prog. Mgr. I
 Aged/Disabled
 Waiver

HHR Prog Mrg. I
 Vacant
 (BMS 0900011)
 Home Health /
 Hospice
 Private Duty
 Nursing

Anita Souder
 HHR Associate
 HCPCS/CPT
 File Maintenance
 Customer Service
 Manual Claim
 Review
 POS Support

Kelley Johnson
 HHR Prog. Mgr. I
 Nursing Home
 ICF/MR

Vacant
 (BMS 0900008)
 HHR Prog. Mgr. I
 Occupational
 Therapy
 Physical Therapy
 Speech Therapy
 Augmentative
 Communication
 Hearing
 Vision
 Dental

Policy, PR & PA Support
 Vacant
 Help Desk Ana. II
 Faye Hunter
 HHR Associate
 Office Assistant III

MMIS Eligibility Unit
 Vickie Craft
 Supervisor II
 Vacant
 Bette Loudermilk
 Beverly Lucas
 Shella Norman
 (All HHR Associates)

Vacant
 BMS 0900015
 Acct. Auditor IV

Vacant
 BMS 0900016
 Acct. Auditor IV

Admin. Manuals
 Associated Prog. Management
 Terrany Thomas
 HHR Specialist, Sr.

HHR Prog Mrg. I
 Vacant
 Behavioral Health Services

State Plan
 Contract Management
 Alva Page
 HHR Prog. Manager I

Policy Coordination
 Provider Enrollment
 Donna Nix
 HHR Specialist, Sr.

HHR Prog Mrg. I
 Vacant
 Behavioral Health Services

Vicki Cunningham
 Pharmacist
 DUR/Retro DUR
 Pharmacy Lock -in
 Clinical Criteria
 Development /
 Support
 Special Projects
 Medicaid Redesign

Bev Campbell O
 1/16/2010
 HHR Prog. Mgr. I
 Hospitals
 CAH
 FQHC/RHC
 Organ Transplants
 Renal Dialysis

Stacy Hanshaw, RN
 HHR Prog. Mgr. I
 Labs / Pathology
 Radiology
 Adult Vaccines
 Out of State
 Sterilization
 Hysterectomy
 Pregnancy
 Termination
 Transportation

Operation Monitoring
 Vacant
 Carol Eminger
 Sharon Duncan
 Annette Spears
 (All HHR Associates)
 Steve Keenan
 Office Assistant II

Medicare CBuy In
 Bill Payne
 Supervisor I
 Richard Holcomb
 Vacant
 Office Assistant III

Vacant
 BMS 0900015
 Acct. Auditor IV

Vacant
 BMS 0900016
 Acct. Auditor IV

State Plan
 Contract Management
 Alva Page
 HHR Prog. Manager I

Policy Coordination
 Provider Enrollment
 Donna Nix
 HHR Specialist, Sr.

HHR Prog Mrg. I
 Vacant
 Behavioral Health Services

State Plan
 Contract Management
 Alva Page
 HHR Prog. Manager I

HHR Prog Mrg. I
 Vacant
 Behavioral Health Services

Donna Schivelier
 HHR Associate
 NDC File
 Maintenance
 Drug Appeals
 Lock-in Support
 POS Support

Virginia Evans
 HHR Specialist
 DME

Vacant
 HHR Specialist, Sr.
 Medicaid Managed
 Care
 OMCFH/BPH
 Coordination
 OMCFH Programs